



The Manual Release Station MCP-C652Y is provided to manually activate the agent release in a typical Fire Suppression System. Distinctively in 'Yellow' ABS plastic housing, it differentiates itself from those normally in 'Red', that are used in Fire Alarm Systems.

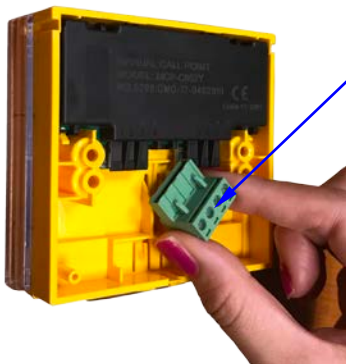
They are alarm latching, with LED alarm indication provided as standard. Every unit is provided with a special 'Key' to facilitate the resetting of the unit during testing or routine inspection.

#### Features :-

- Complies to the latest EN 54-11 Standards
- Non-breaking resettable 'Glass' via special key
- LED light provided to indicate activation
- Plug-in type of Termination for ease of Installation
- With Transparent Flip Cover for extra protection



Manual Release Station  
Model : MCP-C652Y

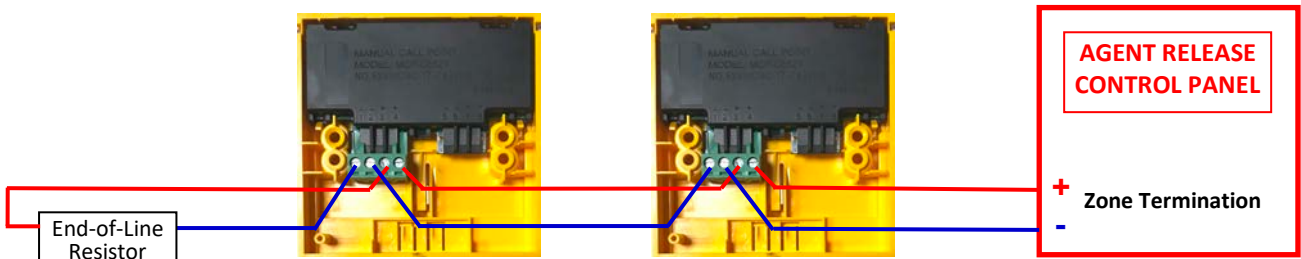


Plug-in Terminals for ease of wiring installation



Transparent Flip Cover – For extra protection against accidental activation

Technical Specifications :-	
Operation Voltage	24VDC
Monitoring Currently	0mA
Alarm Current	46.3mA @ 24VDC
Operating Temperature	-10 °C to +55°C
Relative Humidity	95%, Non-Condensing
Ingress Protection	IP 43
Dimension in mm. (Ht. x Width x Depth)	89.5 x 87 x 26 (without Back Box) 89.5 x 87 x 58 (with Back Box)
Weight	137g (with Back Box) 84g (without Back Box)
Alarm Contact (Terminal 1,2 and 3,4)	470 Ω with LED
Alarm Contact (Terminal 5,6 and 7,8)	N/O without Resistor & LED
<p style="text-align: center;"><b>Typical Circuitry</b></p>	



**TYPICAL TERMINATION DIAGRAM (Using Terminal 1,2 and 3,4)**



## Innovative Resettable 'Break-glass'.....

....with the look and feel of a real Break-glass, but without the trouble of replacement after activation....

### TO ACTIVATE ALARM :-



1) Flip up the Transparent Hinge Cover

2) Position your finger onto the centre of the Break-glass'.

**Press Hard to Activate.**

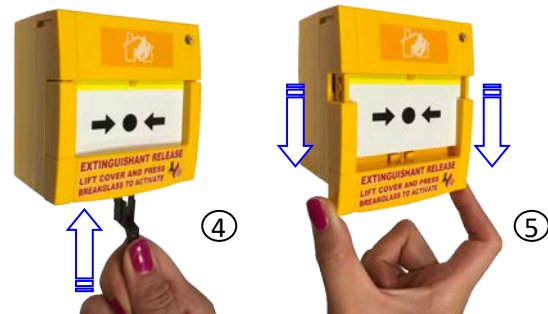
The Yellow indicator will be shown once the Call Point is activated.



3) To activate, press hard on the 'Break-glass' and it will snap backwards.

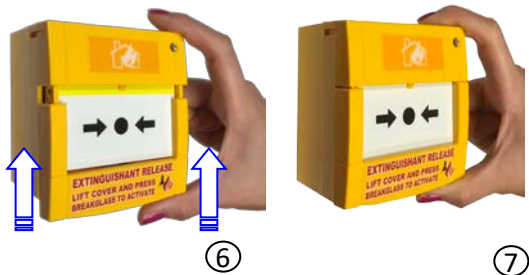
- Yellow indicator will be exposed at the top.
- Alarm Signal shall be sent.

### TO 'RESET' MANUAL CALL POINT :-



4) To reset, insert the special Key at the bottom reset keyhole of the Manual Call Point.

5) Slide down the side casing of the Manual Call Point downwards



6) Press and slide upwards the casing back to its original position.

7) Once the casing is snapped back, the Manual Call Point is properly 'Reset' to its normal condition.

Multron Systems Pte Ltd  
217 Kallang Bahru, Multron Building, Singapore 339 347

6395 6868  
6395 6869

info @ multron.com  
www. multron. com

